



Plan for South Somerset to 2026

Have your say

A consultation event is being held in your area - see the back page for details.

Do these subjects matter to you, your children and where you live?

- » Jobs
- » Homes
- » Shops
- » Health services
- » Recreation
- » Tourism

We need your feedback on the plan that will identify:

- How much housing will be built and where,
- Where industry providing jobs will be located,
- What roads, schools, shops, health centres and green spaces you feel are required until 2026.

What is its purpose?

The draft plan (known as the Core Strategy) will form part of a series of documents called the Local Development Framework, used to guide and manage new development and change across South Somerset up to 2026.

The story so far...

The draft plan (Core Strategy) is not yet council policy. It has been shaped by evidence about the local area and by engagement with the community. It includes some 'preferred options' on which we are seeking your views before final publication. We need your help to make sure the details are correct and to make sure we haven't missed important facts.

↓	March 2008: Core Strategy Issues and Options document consultation
↓	8 October to 3 December 2010: Public consultation on draft Core Strategy (incorporating 'preferred options')
↓	December 2010 to July 2011: Evaluate all responses and finalise Core Strategy for approval by South Somerset District Council
↓	September 2011: Publication of Core Strategy. Further public consultation
↓	December 2011 to January 2012: Examination by Planning Inspector
↓	Spring to early summer 2012: Adoption

Why do we need growth?

"Our population is growing. We are all living longer and people move here from elsewhere, often to retire. At the same time we need employment growth so there are jobs for local people and those leaving education. A vibrant economy means low unemployment and enough homes, health services, leisure facilities and good shops set in an area where people want to live. We need to plan carefully to meet the future needs of those who live in our towns and villages, especially to get homes and jobs, in the right places and with the right balance."

Cllr. Ric Pallister, Deputy Leader and Portfolio Holder for Spatial Planning

Printed on recycled paper at a cost of 4p per copy.

Plan for South Somerset 2026: Our Vision

“South Somerset is a thriving, attractive and affordable place to live and work. Its settlements are more self-contained with the opportunity for using less energy in businesses and everyday living.”

Objectives

- Safe, inclusive, sustainable communities
- Health enhancing environment
- Low carbon quality services and facilities
- Integrated sustainable transport system
- High performing, low carbon economy
- Balanced housing market
- Eco town (well-designed homes connected to open spaces, facilities and local employment) for Yeovil
- Protected and enhanced natural environment, maintaining a wide range of species.

Langport/Huish Episcopi

- 1.5 hectares of new employment land
- 182 homes already allocated*, propose a further 118
- Safeguard local shopping

Somerton

- 1 hectare of new employment land
- 219 homes already allocated*, propose a further 281
- Improvements to town centre services
- Safeguard local shopping

Martock

- 1 hectare of new employment land
- 96 homes already allocated*, propose a further 150

South Petherton

- 1 hectare of new employment land
- 145 homes already allocated*, none further proposed

Ilminster

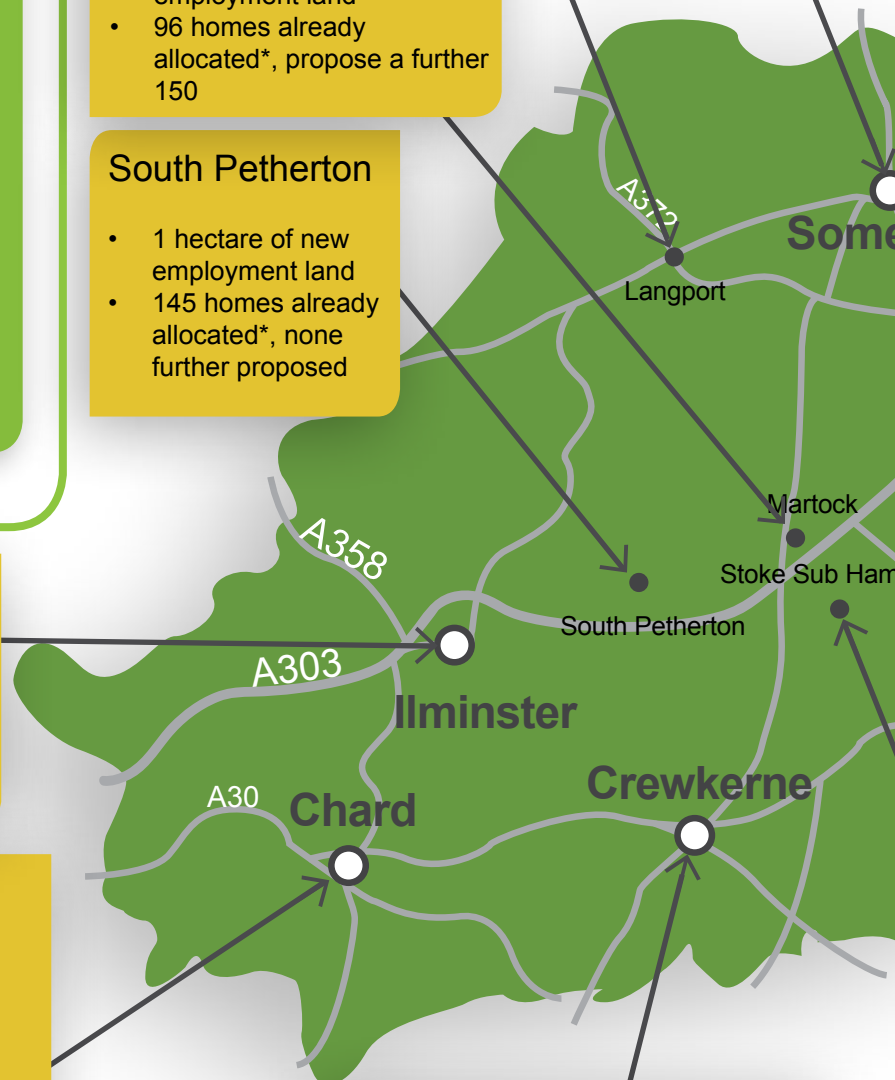
- 19.4 hectares of employment land already committed
- 191 homes already allocated*, propose a further 340
- Increase local shopping

Chard

- 13 hectares of new employment land
- 1,863 homes already allocated*, propose a further 328
- 1 new primary school
- 2 neighbourhood centres (Millfields and Holbear)
- Improve town centre facilities
- Town centre road improvements
- Improve local services, including leisure
- Increase town centre shopping

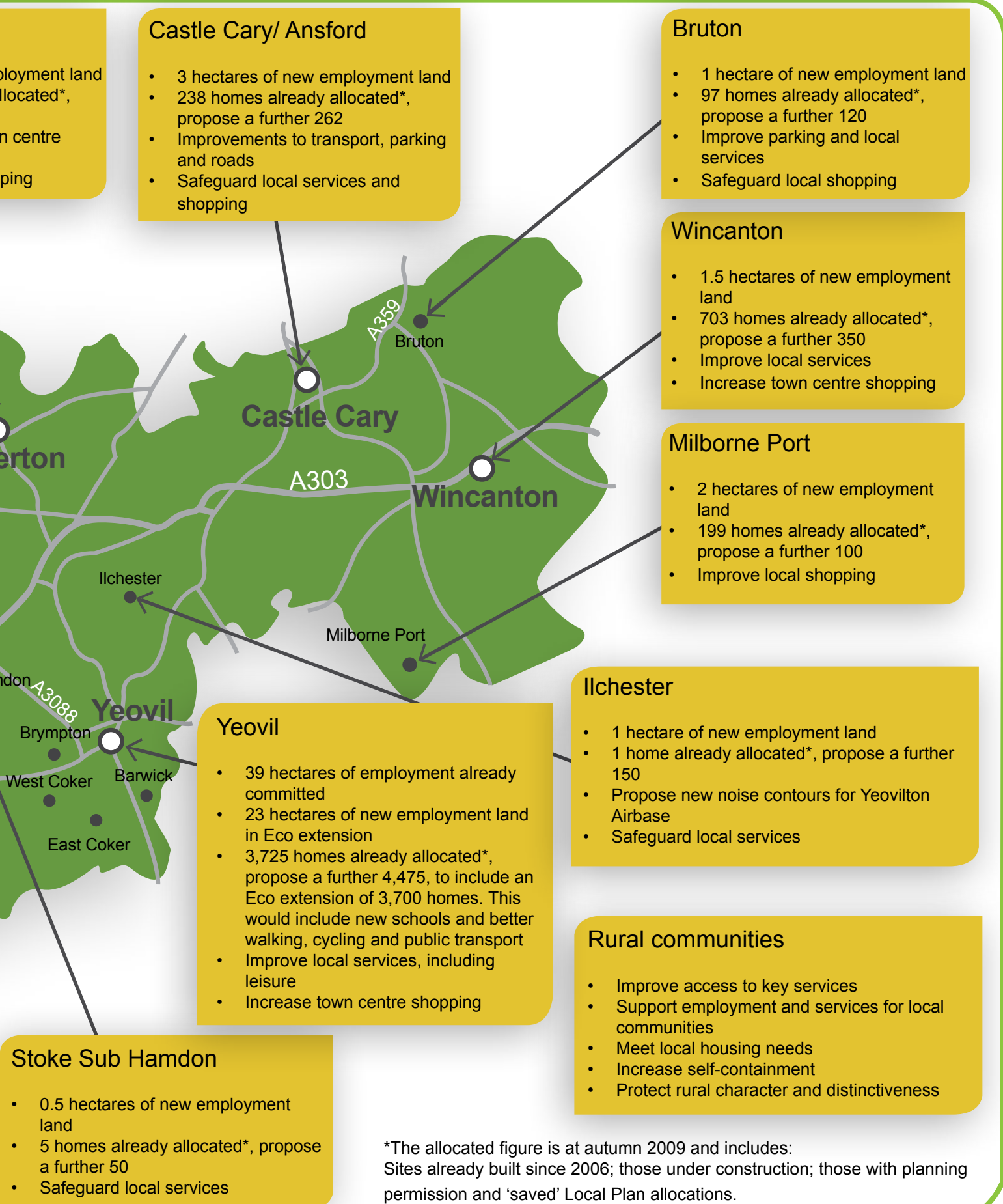
Crewkerne

- 10.53 hectares of employment land already committed
- 928 homes already allocated*, propose a further 100
- Better road links for industrial estate
- Increase town centre shopping



Have your say on these proposals

These are the current 'preferred options' being put forward from 2006 to 2026. You are invited to view and comment on all of the options that have been identified, either online or at your local consultation event. (See back page for more details).



Find out more and give us your views

We are holding a number of exhibitions and events throughout October and November 2010. Here you can meet council representatives and discuss the proposals and policies that interest you and ensure you have your say.

1 Consultation events

Tuesday, 12 October	Somerton , Edgar Hall	4pm to 7 pm
Wednesday 13 October	Milborne Port , Town Hall	3pm to 7pm
Friday 15 October	Chard , Guild Hall	3pm to 7pm
Monday 18 October	Martock , Market House	4pm to 7pm
Wednesday, 20 October	Bruton , Bruton Museum	3pm to 7pm
Thursday, 21 October	Ilchester , Ilchester Town Hall	3pm to 7pm
Saturday, 23 October	Castle Cary , Market House	9am to 1pm
Tuesday, 26 October	Barwick , Village Hall	4pm to 7.30pm
Wednesday, 27 October	East Coker , Village Hall	4pm to 8.30pm
Saturday, 30 October	Yeovil , Yeovil Town Centre, Vicarage Walk (SSDC resource bus)	9am to 2pm
Wednesday, 3 November	Stoke sub Hamdon , Memorial Hall	4pm to 7pm
Thursday, 4 November	Yeovil , the Octagon Theatre	5pm to 8pm
Thursday, 4 November	South Petherton , Blake Hall	4pm to 7pm
Saturday, 6 November	Ilminster , Tesco's car park (SSDC resource bus)	9am to 1pm
Monday, 8 November	Langport , Huish Episcopi Science College, Wincanton Road, Huish Episcopi	4.30pm to 8pm
Tuesday, 9 November	Wincanton , Town Hall	4pm to 7pm
Wednesday, 10 November	West Coker , West Coker Club	4pm to 7.30pm
Saturday, 20 November	Crewkerne , Henhayes Centre (South Street car park)	9am to 1pm

Further events are being planned or will be undertaken where needed. Please check our website and local press for further information.

The full document is available on our website: www.southsomerset.gov.uk/corestrategy

2

Do it online



You can send any feedback to us online, by visiting:

www.southsomerset.gov.uk/corestrategy

More details will be added to our website from 8 October to 3 December 2010.

Email us: planning.policy@southsomerset.gov.uk

Call us: 01935 462462

3 Visit us

You can also visit any of our council offices (from 8 October until 3 December) to see the draft Core Strategy and give feedback:

- Brympton Way, Yeovil, BA20 2HT
- Churchfield, Wincanton, BA9 9AG
- Holyrood House, Chard, TA20 2YA
- Kelways, Langport, TA10 9YE
- Petters House, Yeovil, BA20 1AS

If you would like this document translated into other languages or into Braille, large print, audio tape or CD, please call 01935 462462.

Dokument ten jest na życzenie udostępniany w językowych polskim.

Este documento encontra-se disponível em Português, a pedido.